

**NOTICE OF SERVICE INTERRUPTION/WORK FORM**

<b>Date of Request (yyyy/mm/dd):</b> _____		<b>Requester:</b> _____	
<b>Start Date – End</b>			
Start Date (yyyy/mm/dd) _____ Time (s) _____		Notes _____	
End Date (yyyy/mm/dd) _____ Time (s) _____		_____	
<b>Building(s) Affected:</b>	1: _____	2: _____	
	3: _____	4: _____	
<b>Areas/Rooms Affected:</b> _____			
<b>Service to be interrupted:</b>	1: _____	2: _____	
	3: _____	4: _____	
<b>Description/Reason for Project:</b>			
<b>Contractor:</b> _____		<b>Phone #:</b> _____	
<b>Contractor/Project Managers:</b> _____		<b>Phone #:</b> _____	
Should you have any questions or concerns, please contact			
<b>Notes:</b>			

GROUND FLOOR - ESSEX PH. II

ROOM #	AIR UNIT
B-72	HV8
B-73	HV8
B-73a	HV8
B-74a	HV8
B-75	HV8
B-76	HV8
B-77	AC12 <i>Mod</i>
B-79	AC12
B-82	AC13
B-83	AC13
B-84	AC12 <i>Mod</i>
B-86	HV7
B-88-1	AC13
B-88-2	AC13
B-89	AC13
B-90	AC13
B-92-1	AC13
B-92-2	AC13
B-92-4	AC13
B-92-5	AC13
B-93	HV7
B-94a	HV7
B-94b	HV7
B-94c	HV7
B-94d	HV7
B-95	AC13

B-87 AC12 ←

*Has its own cooling unit*

FIRST FLOOR

172	HV8
172-1	HV8
172-2	HV8
172-3	HV8
172-4	HV8
173	HV8
173-1	HV8
173-2	HV8
173-3	HV8
173-4	HV8
173-5	HV8
173-6	HV8
173-7	HV8
175	AC13&AC15
182-A	HV7
182-B	HV7
182-C	HV7
182-D	HV7
182-E	HV7
182-F	HV7
182-G	HV7
182-H	HV7
182-J	HV7
186	HV7
186-A	HV7
187	HV7

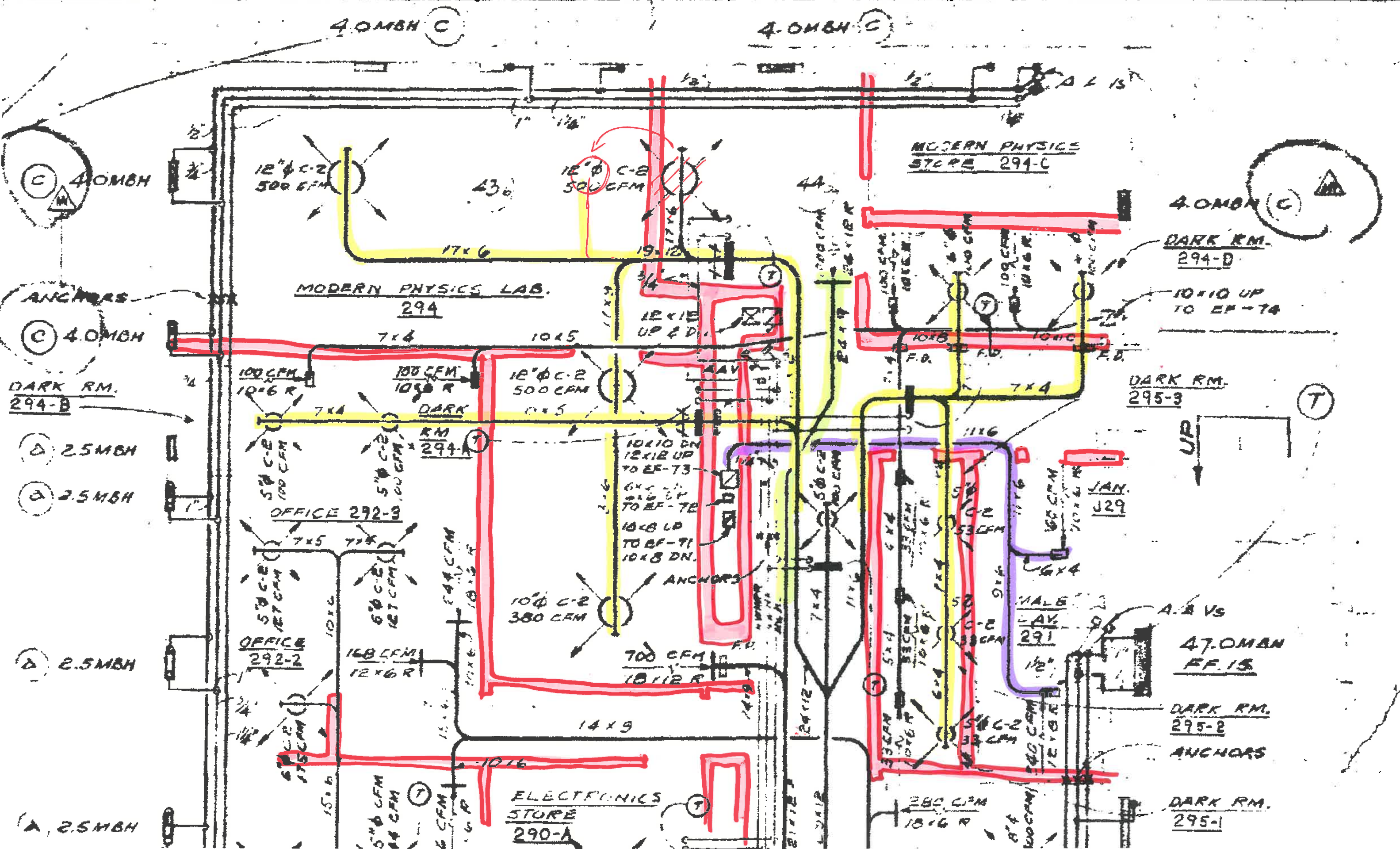
FIRST FLOOR-cont'd

ROOM #	AIR UNIT
188	HV7
189-1	HV7
189-2	HV7
189-3	HV7
189-4	HV7
189-5	HV7
189-6	HV7
190	AC13

SECOND FLOOR

272	HV8
273-1	AC14
273-2	AC14
273-3	AC14
274-1	HV8
274-3	HV8
275	AC14
275-1	AC14
275-2	AC14
275-3	AC14
275-4	AC14
276	HV8
277-1	AC14
277-2	AC14
277-3	AC14
277-4	AC14
282-1	HV8
282-2	HV8
282-3	HV8
282-4	AC14
285-285-A	HV9 ✓
286	HV9
287	HV9
287-A	HV9
288-1	AC16
288-2	AC16
288-3	AC16
289-1	AC16
289-2	AC16
289-3	AC16
289-4	AC16
289-5	AC16
289-6	AC16
289-7	AC16
290	HV9
290-1	HV9
292-D A	AC16
292-2 B	AC16
292-3 C	AC16
294	HV9
294-1	HV9
294-2	HV9
294-3 C	HV9
295-2	HV9
295-3	HV9

# 2<sup>nd</sup> FLOOR



## ABATEMENT SCHEDULE PER ROOM #

Level	Room	HVAC unit	Temp. Shutdown #3	Level Shutdown #3	Temp. Shutdown #4	Work
			Sept. 28th	Sept. 28th to Oct. 16th	Not required	
2nd Floor	285	HV9				
2nd Floor	285-A	HV9				
2nd Floor	286	HV9				
2nd Floor	287	HV9				
2nd Floor	287-A	HV9				
2nd Floor	288-1	AC16				
2nd Floor	288-2	AC16				
2nd Floor	288-3	AC16				
2nd Floor	289-1	AC16				
2nd Floor	289-2	AC16				
2nd Floor	289-3	AC16				
2nd Floor	289-4	AC16				
2nd Floor	289-5	AC16				
2nd Floor	289-6	AC16				
2nd Floor	289-7	AC16				
2nd Floor	290	HV9				
2nd Floor	290-1	HV9				
2nd Floor	291	?		no exhaust		
2nd Floor	292-A	AC16				
2nd Floor	292-B	AC16				
2nd Floor	292-C	AC16				
2nd Floor	292-D	AC16		no supply		
2nd Floor	294	HV9		no supply, no return		fit out of the connection through room 294 and adjacent corridor, new partition, ceiling, doors
2nd Floor	294-A	HV9		no supply		
2nd Floor	294-C	HV9		no supply, no return		
2nd Floor	294-D	HV9		no supply, no return		
2nd Floor	295-2	HV9		no supply		
2nd Floor	295-3	HV9		no supply		
Level	Room	HVAC unit	Temp. Shutdown #3	Level Shutdown #3	Temp. Shutdown #4	Work
			Not required		Not required	
3rd Floor	385-1	AC17				
3rd Floor	385-2	AC17				
3rd Floor	385-3	AC17				
3rd Floor	385-4	AC17				
3rd Floor	385-5	AC17				
3rd Floor	385-6	AC17				
3rd Floor	385-7	AC17				
3rd Floor	385-8	AC17				
3rd Floor	385-9	AC17				
3rd Floor	386-1	AC17				
3rd Floor	386-2	AC17				
3rd Floor	387-A	AC17				
3rd Floor	387-B	AC17				
3rd Floor	387-C	AC17				
3rd Floor	387-D	AC17				
3rd Floor	388-1	AC17				
3rd Floor	388-2	AC17				
3rd Floor	388-3	AC17				
3rd Floor	388-4	AC17				
3rd Floor	388-5	AC17				
3rd Floor	389-1	AC17				
3rd Floor	389-2	AC17				
3rd Floor	389-3	AC17				
3rd Floor	389-4	AC17				
3rd Floor	390-1	AC17				
3rd Floor	390-2	AC17				
3rd Floor	392	AC17				fit out of the connection through room 392 and adjacent corridor, new partition, ceiling, doors
3rd Floor	393-A	AC17				
3rd Floor	393-B	AC17				
3rd Floor	394-1	AC17				
3rd Floor	394-2	AC17				
3rd Floor	394-3	AC17				
3rd Floor	394-4	AC17				
3rd Floor	394-5	AC17				